

SUSANNAH LOVIS

BURLINGTON ARCADE, LONDON



www.susannahlovis.com



- | | | | | | |
|---|---|--------|----|--|---------|
| 1 | Antique citrine cross pendant, by Carlo Giuliano c.1890 | £3,300 | 9 | Pavé set diamond hoops by Boucheron | £POA |
| 2 | Antique gold and sapphire chain | £990 | 10 | Diamond set floral band | £1,250 |
| 3 | Essex crystal tiger | £2,350 | 11 | Ruby heart | £3,900 |
| 4 | 1870s architectural earrings | £2,900 | 12 | Aquamarine bracelet circa 1930 | £2,850 |
| 5 | Georgian emerald and diamond ring | £4,400 | 13 | 1940s buckle bracelet | £4,600 |
| 6 | 18ct gold knots | £1,850 | 14 | 3.98 carat Burma ruby and diamond ring | £58,000 |
| 7 | Diamond and onyx bangle by Roberto Coin | £8,900 | 15 | Diamond cluster ring | £3,950 |
| 8 | Diamond half eternity | £1,925 | 16 | Gold and diamond giraffe brooch | £2,600 |



- | | | | | | |
|----|-----------------------------------|--------|----|-----------------------------------|---------|
| 17 | Ruby and diamond bumble bee | £1,450 | 26 | Brilliant cut diamond eternity | £7,350 |
| 18 | Ruby and pearl beads | £8,900 | 27 | Victorian butterfly | £9,900 |
| 19 | Ruby, emerald and pearl beads | £5,650 | 28 | Art Deco ring | £17,500 |
| 20 | Diamond rivière | £3,800 | 29 | Diamond flower earrings | £890 |
| 21 | Victorian bee | £1,950 | 30 | Ruby and diamond bracelet | £10,200 |
| 22 | Pearl and diamond pendant | £480 | 31 | Ruby and diamond line bracelet | £6,880 |
| 23 | Diamond cross | £1,350 | 32 | Diamond and ruby heart earrings | £6,850 |
| 24 | Diamond and rock crystal heart | £850 | 33 | Old cushion cut diamond ring | £4,300 |
| 25 | Victorian opal and diamond beetle | £4,950 | 34 | Opal and diamond ring, circa 1915 | £4,500 |
| | | | 35 | | |
| | | | 36 | | |
| | | | 37 | | |



35	<i>Pearl and diamond earrings</i>	£6,300	44	<i>Diamond, emerald and pearl pendant</i>	£6,100
36	<i>Small diamond hoops</i>	£950	45	<i>Baguette cut diamond eternity</i>	£1,600
37	<i>Ruby and diamond flower earrings</i>	£2,900	46	<i>Emerald and diamond clusters</i>	£3,760
38	<i>Emerald and diamond half eternity</i>	£1,600	47	<i>Large emerald and diamond bow brooch</i>	£2,450
39	<i>Pear shaped diamond pendant, circa 1930</i>	£6,900	48	<i>Emerald and diamond twin heart ring</i>	£9,400
40	<i>South Sea pearl and diamond earrings</i>	£9,900	49	<i>Diamond earrings, by Cartier, circa 1925</i>	£24,500
41	<i>Emerald and diamond bumble bee</i>	£1,580	50	<i>Georgian emerald and diamond ring, circa 1830</i>	£6,800
42	<i>Pearl choker with emerald and diamond clasp</i>	£9,500	51	<i>Antique cockerel brooch</i>	£9,600
43	<i>Deco style diamond articulated pendant earring</i>	£5,900	52	<i>Emerald and diamond flower earrings</i>	£1,700



53 Pearl and baguette cut diamond earrings	£760	62 Victorian diamond bow pendent earrings	£6,600
54 Small emerald and diamond bow brooch	£2,150	63 1920s diamond and pearl bracelet	£29,950
55 Emerald and diamond ring	£2,900	64 Emerald and diamond line bracelet	£6,150
56 Emerald and diamond oval ring	£3,800	65 Old cut diamond heart	£7,900
57 Pearl ear studs	£210	66 Sapphire and diamond cushion earrings	£14,500
58 Diamond pendent earrings	£6,950	67 Diamond and sapphire necklace	£12,400
59 Emerald and diamond shield ring	£15,000	68 Sapphire and ruby beads	£6,500
60 Victorian diamond leaf earrings and brooch	£19,000	69 Sapphire beads	£3,900
61 Diamond and enamel pheasant brooch	£1,850	70 Sapphire and diamond bumble bee	£1,450

65



66



67



70



69

68

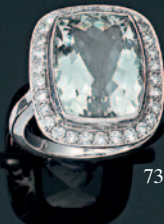
71



72



73



77



74



75



76



81

80



78



79



82



83

71	Sapphire and diamond flower earrings	£7,500	80	Aquamarine ring	£2,950
72	Diamond circle earrings	£2,900	81	Sapphire and diamond line bracelet	£6,550
73	Green quartz and diamond ring	£2,500	82	Diamond bracelet	£5,500
74	Large aquamarine earrings	£3,950	83	Butterfly earrings	£890
75	Antique dragonfly brooch	£1,950			
76	4.24 carat Burma sapphire and diamond ring	£14,850			
77	Pearl and diamond earrings	£990			
78	Diamond earrings	£1,700			
79	Diamond hoops	£790			



84	Victorian gold earrings	£990	94	Tourmaline earrings	£1,080
85	Diamond brooch/pendant	£1,850	95	Large quilted ear studs	£2,350
86	Victorian turquoise, pearl and ruby snake necklace	£6,950	96	Four row diamond bracelet, 20 carats	£19,500
87	Diamond and gold knots	£500	97	Multi strand bracelet, by Bulgari	£1,850
88	Victorian diamond and sapphire ring	£2,950	98	Pink sapphire and colour change garnet ring	£2,250
89	Victorian old cut diamond cluster	£3,950	99	Antique mother of pearl and ruby cufflinks	£850
90	Giraffe bangle	£6,300	100	Victorian diamond cufflinks	£1,720
91	Three band crossover diamond ring	£1,950	101	Diamond and sapphire targets	£3,900
92	Yellow and white gold hoops, by Bulgari	£1,200	102	Diamond and ruby foxes	£1,450
93	Diamond and gold twisted rope ring, circa 1950	£4,500	103	Platinum and diamond shields	£2,150



- | | | |
|-----|--|--------|
| 104 | Victorian amethysts | £750 |
| 105 | Silver ovals with cabochon cut sapphires | £420 |
| 106 | Antique tiger's eye cufflinks | £550 |
| 107 | Vintage dachshund cufflinks with ruby eyes | £1,800 |
| 108 | Gold rounds | £780 |
| 109 | Lapis and gold bar | £550 |
| 110 | Gold and diamond skulls | £3,300 |
| 111 | Enamel and gold knots | £990 |
| | All enamel cufflinks | £150 |
| | All silver creature cufflinks | £190 |

SUSANNAH LOVIS

50 Burlington Arcade, London W1J 0QH

Tel: +44 (0) 207 493 2008

Fax: +44 (0) 207 681 1196

info@susannahlovis.com

www.susannahlovis.com

Front Cover: 5.01 carat diamond ring certified E colour £POA